



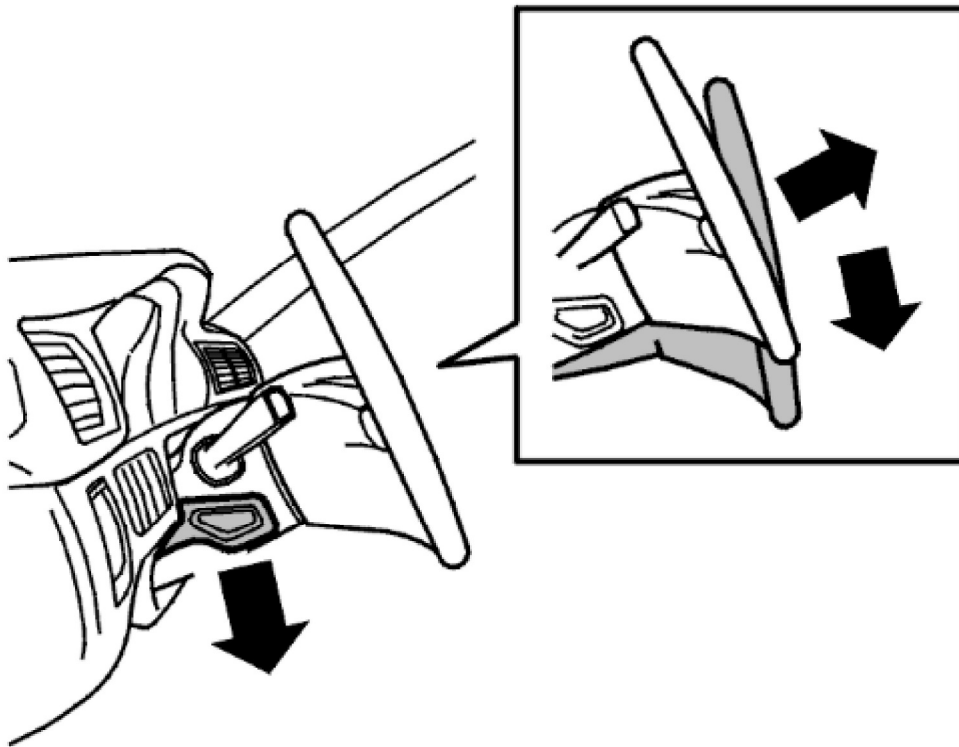
Replacing the steering wheel lock

Preparations

Battery

- Make a note of the radio code if an anti-theft radio is installed
 - Switch off the ignition
 - Disconnect the battery negative lead.
-

The steering column

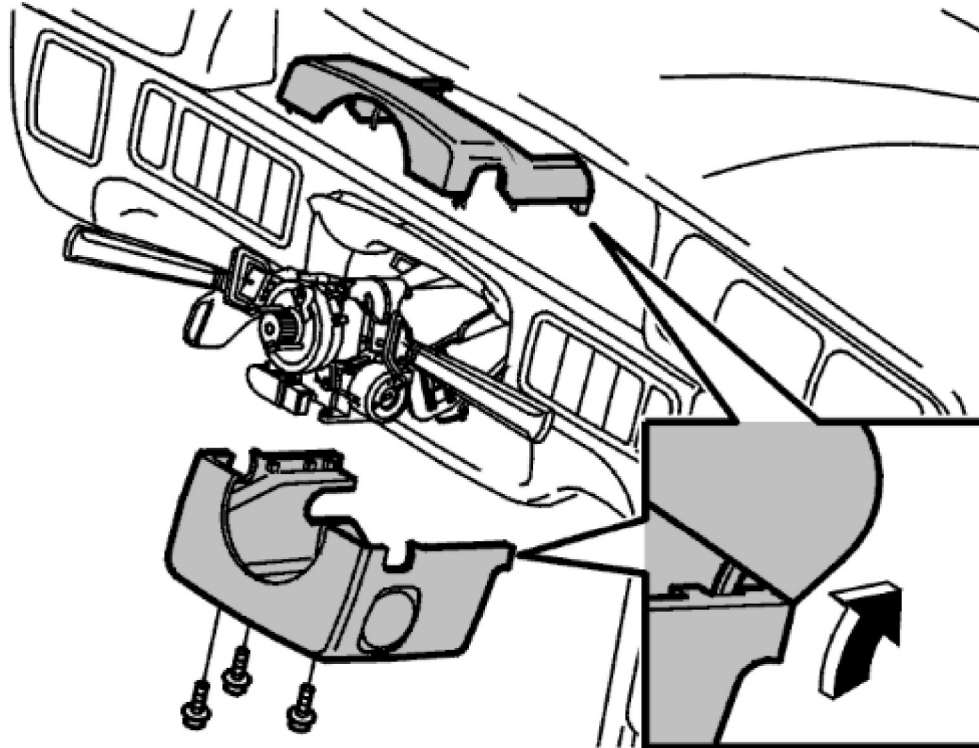


- Fold down the steering wheel adjustment lever
 - Raise the steering wheel to the uppermost position.
-

Removal



Remove:



- the steering wheel. See
- the upper cover for the steering column. Use long Torx TX 15 tool
- the lower cover for the steering column. Use a Torx TX 25 tool.

- **Caution!**
Be careful not to damage the contact reel and cable harness during work.

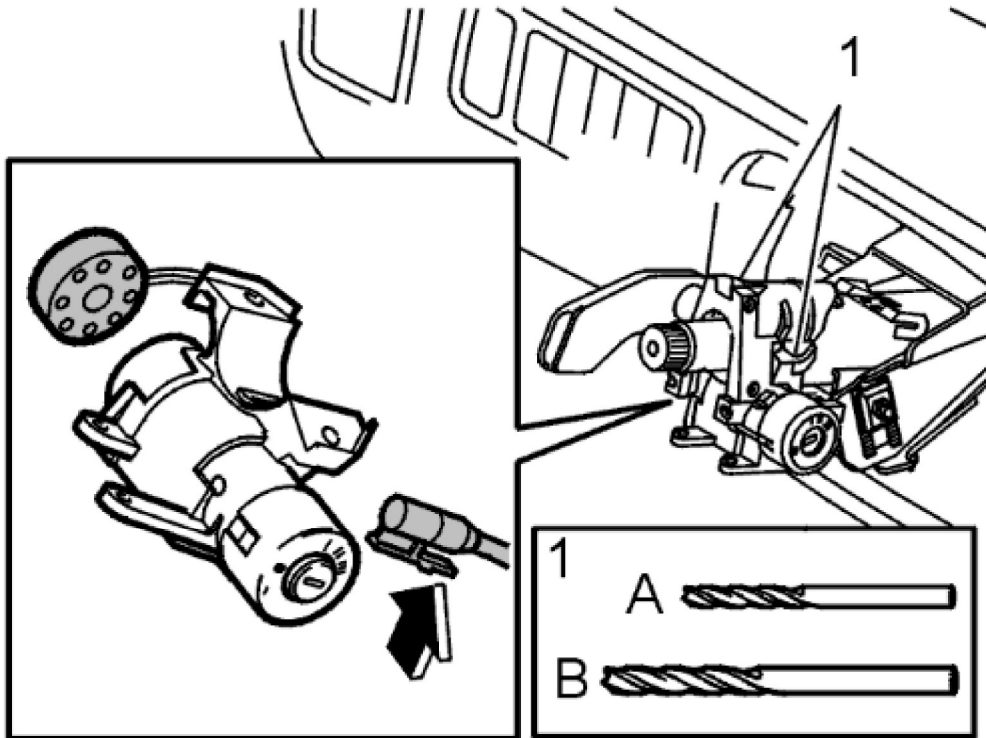
Remove:

- the lever for the turn signal lamps.
Allow the lever to hang from the cable harness
- the lever for the windshield wipers.
Disconnect one of the connectors. Leave the lever hanging from the other connector
- the slip ring
- the holder for the steering lock lighting.

Installation



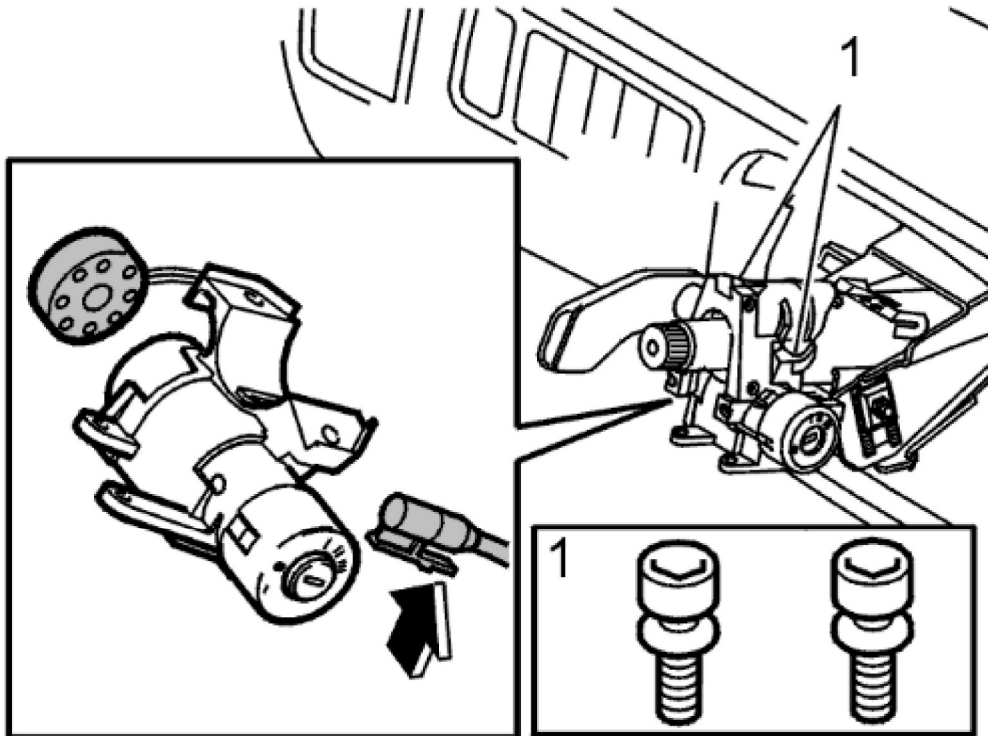
Removing the lock



- **Warning!**
Use protective goggles.
- Pre-drill the screw heads (1) for the mounting. Use a **3 mm** drill bit (A)
- Drill out the screw heads (1). Use a **8 mm** drill bit (B)
- Remove the lock.



Installing a new steering wheel lock



- Position the new steering wheel lock
- Install new security screws (1).



Install:

- **Note!**
Do not forget to connect the disassembled connector.
 - **Caution!**
Ensure that the boot for the windshield wiper lever is in place
 - **Caution!**
Ensure that no wiring is trapped when the steering column covers are installed.
-
- the holder for the steering lock lighting. Use a new bulb
 - the slip ring
 - the lever for the windshield wipers
 - the lever for the turn signal lamps
 - the lower cover for the steering column. Use a Torx TX 25 tool
 - the upper cover for the steering column. Use long Torx TX 15 tool
 - the steering wheel. See .
-

Final adjustments

- Adjust the steering wheel setting
 - Fold up the adjustment lever
 - Connect the battery negative lead
 - Program the radio if applicable.
-