

3904687j

1	AUD	4	PHM	7	TMC
2	MPM	5	MMM	8	SUB
3	ICM	6	AFM	9	GPS

INFOTAINMENT

COMPONENTS ON MOST

AUDio Module (AUD)

An amplifier which also manages the functions of all loudspeakers and the microphone in the roof console.

Located in the cargo compartment behind the left-hand wheel arch.

Media Player Module (MPM)

Positioned uppermost in the center console and available in three versions:

CD player

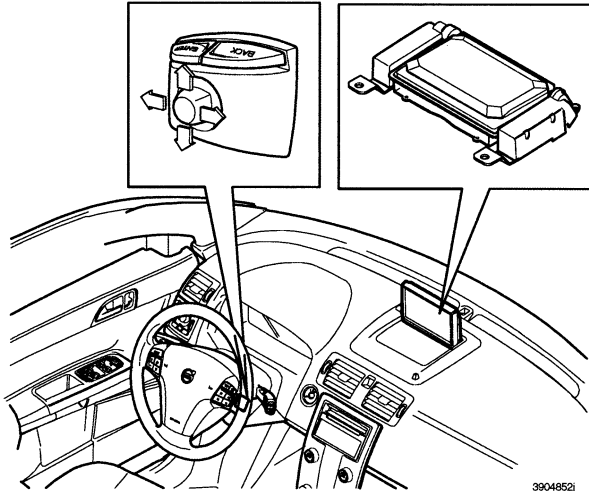
CD changer

Combined CD/Minidisc player.

Infotainment Control Module (ICM)

The ICM is the interface between LS CAN and MOST. It has a graphic monochrome display with a resolution of 128x64 pixels and is located in the center console. Connected to the LIN bus for steering wheel buttons.

MMM (Multi Media Module)



As before the unit has an integrated DVD reader (for maps) and is located in the glove compartment.

The 6.5 inch folding display screen (400 mm x 234 mm) is located in the center of dashboard and is directly connected to the MultiMedia Module (MMM).

There is a steering wheel button for up/down/right/left.

AM/FM Module (AFM)

The radio receiver is positioned on the left side of the parcel shelf (S40), or under the right rear side window (V50).

Subwoofer (SUB)

Has an integrated 140W (2x70W) amplifier and an 8 inch cone transducer. Active with integrated limiter.

Global Positioning System (GPS)

The GPS receiver is located on the left side rear wheel housing beside the AUD.

Antenna for GPS

An active antenna (Shark fin) is bonded to the rear section of the roof and is used by GPS receiver.

Supplied with power by the same coaxial cable that transmits the signals.

On cars without GPS, a termination device is installed to cover the opening in the roof.

Operating Using a Remote Control

ICM can be operated by remote control. The IR detector is in the grille for the center loudspeaker.

AUDIO EQUIPMENT

There are two different levels of audio equipment available for the S40/V50 :

- High Performance
- Premium Sound

NOTE: When upgrading or replacing the sound system, both the amplifiers and the loudspeakers must be changed because the components in the different systems are adapted to each other for impedance and output tolerance.

Subwoofer

Can only be combined with High performance and Premium Sound.

Cone transducer: 8 inch with twin voice coils.

Power: 140W

Frequency range: 20-100 Hz

Trunk depth decreases when the subwoofer is installed.

Media Player

Three variants of media players are available which cannot be combined with each other.

CD player for one disc

CD changer for six discs

Combined CD and MD player

Antenna

The AFM and TMC receivers have antenna inputs. If a TMC is installed, the antenna signals reach the AFM via the TMC receiver.

Radio Reception

All antennas are integrated in the rear window.

The AM and FM (two) antennas are integrated in the rear window of the 540.