



Operation number: 35310-2

Tail lamp

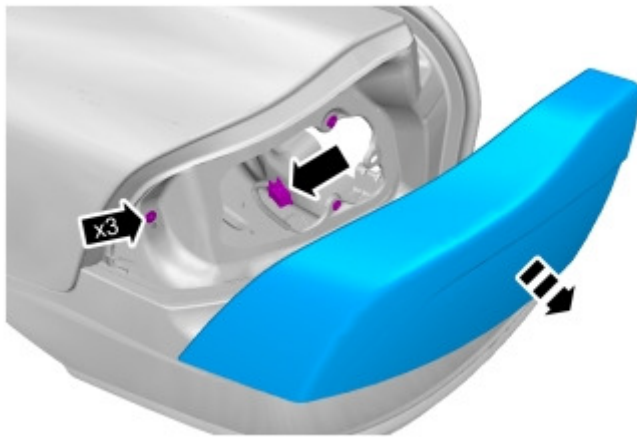
Removal

Note!

Removal steps in this procedure may contain installation details.

Remove the side panel Refer to: [Side panel loadspace.](#)

See the information regarding component location, tail lamp Refer to: [Location of components, tail lamp.](#)



Torque:Tail lamp, 10 Nm

Installation

To install, reverse the removal procedure.
